

Teaching & Scholarship

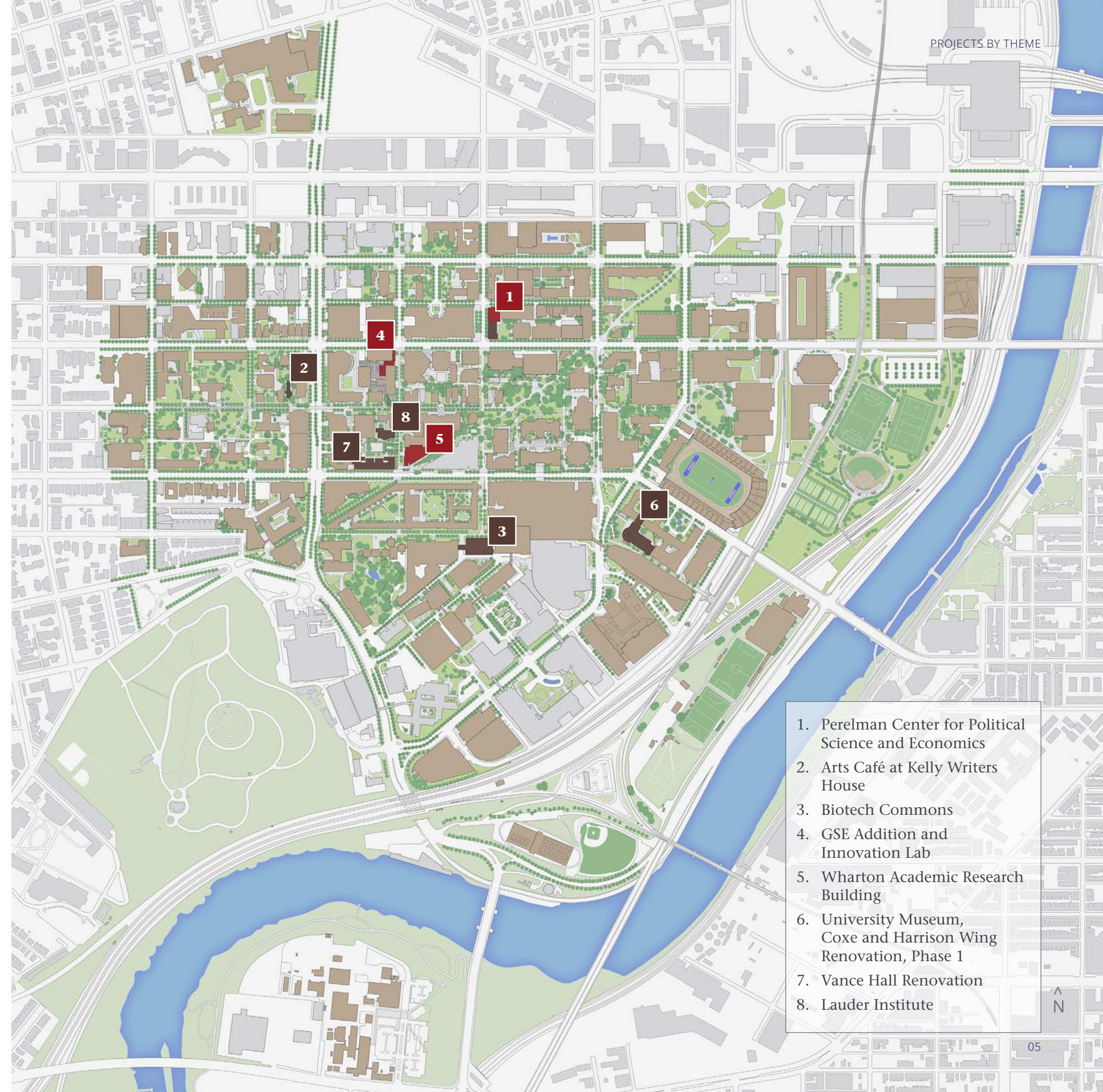
Penn Connects 3.0 outlines new opportunities for integrating knowledge and learning across the University. Penn's compact campus, where all twelve schools and six centers are located within a ten-minute walk of one another, enables faculty and students to combine theoretical learning and practical thinking across disciplines.

Penn Connects 3.0 enhances the compact and walkable nature of the campus by locating several new academic and research projects within the core of the University. These projects will encourage different teaching pedagogies and enhance learning.



Art History curatorial seminar at Museum Archives

NEW CONSTRUCTION RENOVATION OPEN SPACE



1. Perelman Center for Political Science and Economics
2. Arts Café at Kelly Writers House
3. Biotech Commons
4. GSE Addition and Innovation Lab
5. Wharton Academic Research Building
6. University Museum, Coxe and Harrison Wing Renovation, Phase 1
7. Vance Hall Renovation
8. Lauder Institute

NEW CONSTRUCTION RENOVIATION OPEN SPACE



1

SIZE 56,000 GSF (NEW); 54,000 GSF (RENO) **COST** \$78 MILLION



SIZE 230 GSF (NEW); 370 GSF (RENO) **COST** \$2 MILLION

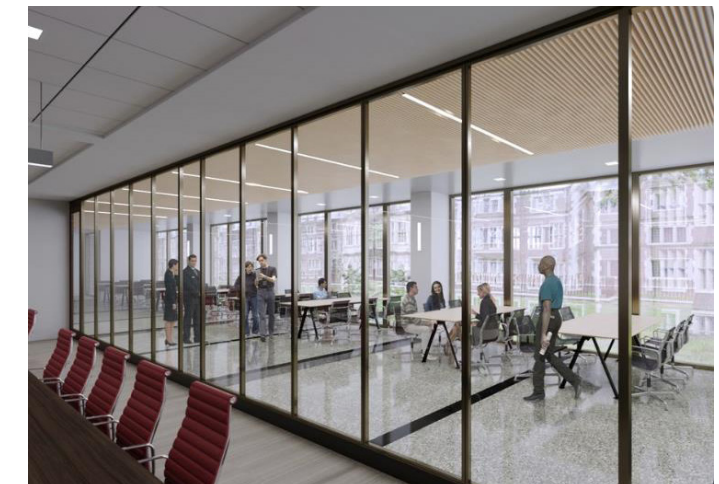
2

ARTS CAFÉ AT KELLY WRITERS HOUSE

The Arts Café transforms an iconic living room at the Writers House into a welcoming home for seminars led by Penn faculty members, workshops and readings by eminent and emerging writers, discussion groups, informal student gatherings, musical performances, literacy outreach projects, and open mic nights. The Arts Café encloses the porch facing Locust Walk, in order to accommodate program growth and changing technology.

PERELMAN CENTER FOR POLITICAL SCIENCE AND ECONOMICS

The Perelman Center for Political Science and Economics offers a new opportunity to consolidate in one location the Political Science Department and Department of Economics, along with related academic programs. Located in a facility that combines a rehabilitation of an existing building with a significant addition to its north, the project features angled aluminum panels on the west façade reflecting sunlight and sky to create a luminous appearance to the building while providing shade to the interior offices. The building program includes an auditorium, classrooms, undergraduate meeting rooms, forum, and faculty offices.



BIOTECH COMMONS

The Biomedical Library currently inhabits the ground floor of the Johnson Pavilion and Stemmler Hall. The enhanced Biotech Commons will improve physical and visual circulation between Penn Medicine buildings, the Nursing School, and Hamilton Walk. The program will accommodate a café, areas for seating, teaching, study, and a flexible gathering space.

SIZE 8,000 GSF **COST** \$10 MILLION

3

GSE ADDITION AND INNOVATION LAB

By adding new and renovated space, the Graduate School of Education (GSE) will be able to relocate off campus departments and research centers to the Social Sciences Quad. The Quad is comprised of Stiteler Hall, the Caster Building, the Solomon Labs, and 3700 Walnut Street, the Graduate School of Education Building. A new entrance facing 37th Street Walk and new collaborative student spaces will link the GSE with Stiteler Hall. In the center of the Social Sciences Quad, the Innovation Lab will replace and enlarge the existing pavilion. The program includes Executive Education, Consortium for Policy Research in Education, Innovation Lab, and a variety of student spaces. The Innovation Lab will include open work spaces, a film studio, lab and observation room, and a classroom as well as administrative and office functions.



SIZE 15,000 GSF (NEW); 10,000 GSF (RENO) **COST** \$24 MILLION

4

NEW CONSTRUCTION RENO RENOVATION OPEN SPACE



WHARTON ACADEMIC RESEARCH BUILDING

This new building will connect to the south side of Steinberg Hall-Dietrich Hall, the Wharton School's primary undergraduate building, with an enclosed skylit atrium that provides student gathering and study space. The lower two floors of academic space will include active learning classrooms, group study rooms, and shared conference rooms, while the upper two floors will host research centers. On the ground level, a new enclosed loading dock and electrical substation will replace the existing service court and an underground electrical vault. The project also includes the restoration of Woodland Walk from 36th Street to 37th Street.

SIZE 80,000 GSF **COST** \$85 MILLION

5

UNIVERSITY MUSEUM, COXE AND HARRISON WINGS RENOVATION, PHASE 1

The Harrison and Coxe Wings of the Penn Museum offer a distinctive architectural setting for both object display and events. The planned renovation includes upgrades to both front and back of house areas: air-conditioning will improve stewardship of the collection as well as visitor comfort; new ramps and elevators will make all Museum areas fully ADA and stroller accessible; improved visitor amenities include new first and third floor restrooms, and upgrades to the Museum's freight elevator, loading docks, and pedestrian pathways in cooperation with Penn Medicine's neighboring Pavilion project. This work will enable future renovations, which will include complete refurbishment of the historic Harrison Auditorium and upgrades to the Egyptian and Chinese galleries.



6 **SIZE** 22,000 GSF **COST** \$22 MILLION

■ NEW CONSTRUCTION ■ RENOVATION ■ OPEN SPACE



7 **SIZE** 24,000 GSF **COST** \$17 MILLION

VANCE HALL RENOVATION

Exterior façade restoration and renovation of the third and fourth floors of Vance Hall to accommodate expansion needs of the Wharton School. The project will include new finishes, flooring, lighting, and furniture for office and academic space.

8 **SIZE** 20,000 GSF **COST** \$4 MILLION

LAUDER INSTITUTE

The Joseph H. Lauder Institute of Management and International Studies, housed in the Lauder Institute, educates and creates a community of global business leaders. Recent growth in Lauder Institute enrollment, faculty, and staff has created a need for additional space. The intimacy of Lauder Institute will be enhanced by dedicated study areas, classrooms, and eating areas. The original state-of-the-art class and meeting rooms will be renovated to meet the best of current educational and meeting technology.

