

INDIVIDUAL RACK SURFACE MOUNT: SECTION

SCALE: 3/4"=1'-0"

**MANUFACTURER**

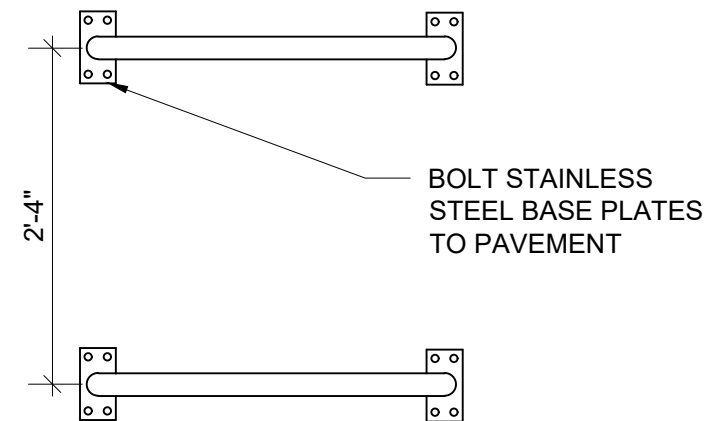
- OPTION 1: CUSTOM STAINLESS STEEL 'U' RACK AS FABRICATED BY C.F. MOORES COMPANY, OR EQUAL.
- OPTION 2: MODEL UX238-U, STAINLESS STEEL AS FABRICATED BY MADRAX DIVISION, GRABER MANUFACTURING, OR EQUAL.

**INSTALLATION**

- PROVIDE 3" x 6" x 1/4" SS PLATE WELDED TO BASE OF RACK.
- ALL WELDS TO BE GROUND AND SMOOTH. BOLT BASE PLATES TO CONCRETE SLAB OR TO PAVERS ON STABLE COMPACTED SURFACE USING (2) 5/8" x 6" SS BOLTS. BOLT HEADS TO BE FLUSH WITH SURFACE OF PLATE.

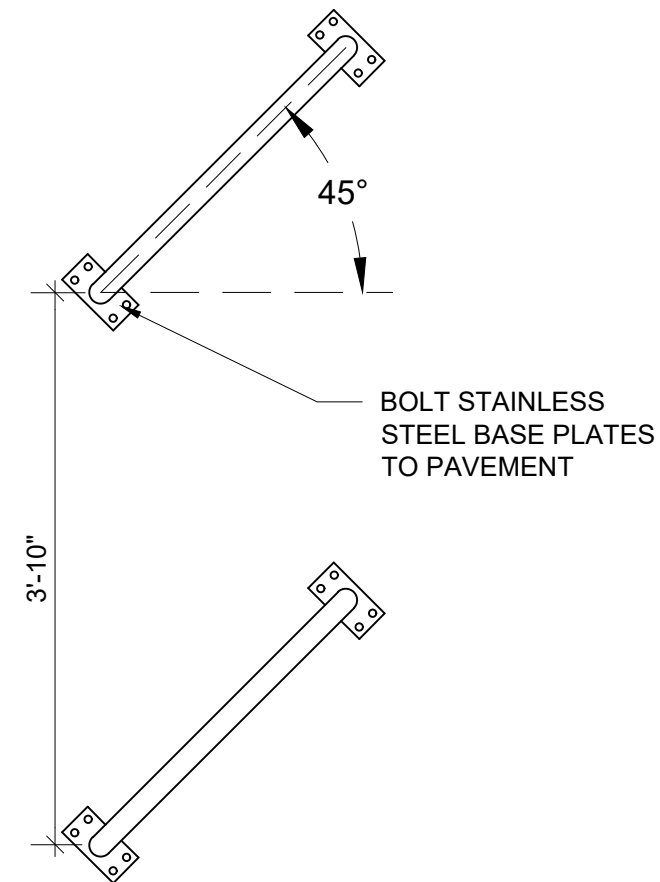
**NOTES**

- BIKE RACKS, HARDWARE, AND FASTENERS TO BE #316 MARINE GRADE STAINLESS STEEL.
- CONFIRM SINGLE OR MULTIPLE RACK INSTALLATIONS AND INSTALLATION METHOD WITH OFFICE OF THE UNIVERSITY ARCHITECT.
- BIKE RACKS IN PUBLIC RIGHT-OF-WAYS MUST CONFORM TO CITY OF PHILADELPHIA'S COMPLETE STREETS DESIGN HANDBOOK.



PERPENDICULAR RACK SURFACE MOUNT: PLAN

SCALE: 3/4"=1'-0"



DIAGONAL RACK SURFACE MOUNT: PLAN

SCALE: 3/4"=1'-0"

CSI 12 93 13 - 1

**SURFACE MOUNTED BICYCLE RACK**  
LANDSCAPE STANDARDS



PRIOR TO CONSTRUCTION, CONFIRM LAYOUT, DIMENSIONS, ADJACENT UTILITIES AND FINAL MATERIALS WITH U OF P OFFICE OF THE UNIVERSITY ARCHITECT. THIS DETAIL TO BE USED AS A GUIDE ONLY. SPECIFIC REVISIONS FOR SITE CONDITIONS AND INTENT ARE THE RESPONSIBILITY OF THE INDIVIDUAL PROJECT DESIGNER.

Facilities & Real Estate Services  
Office of the University Architect  
2022