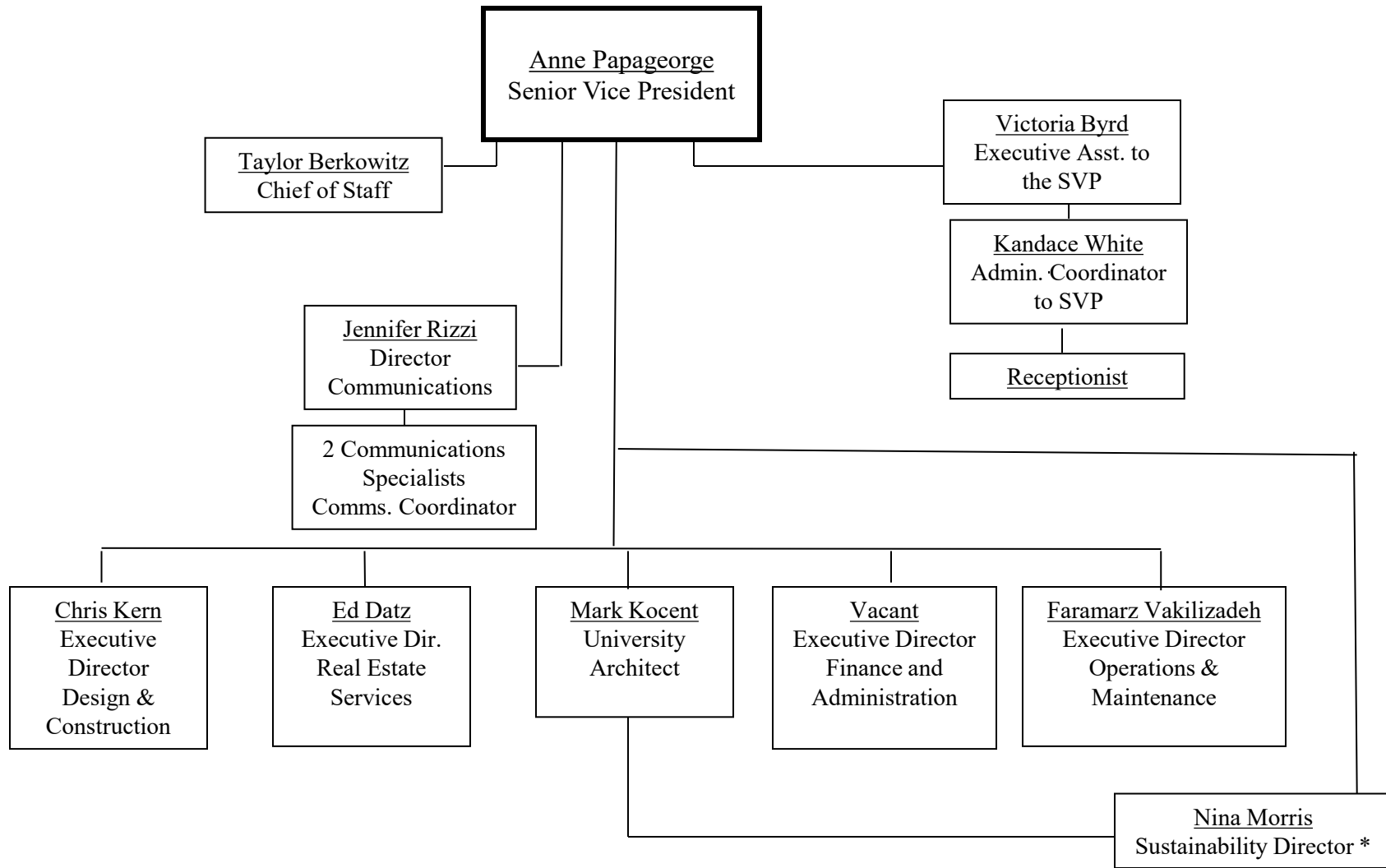
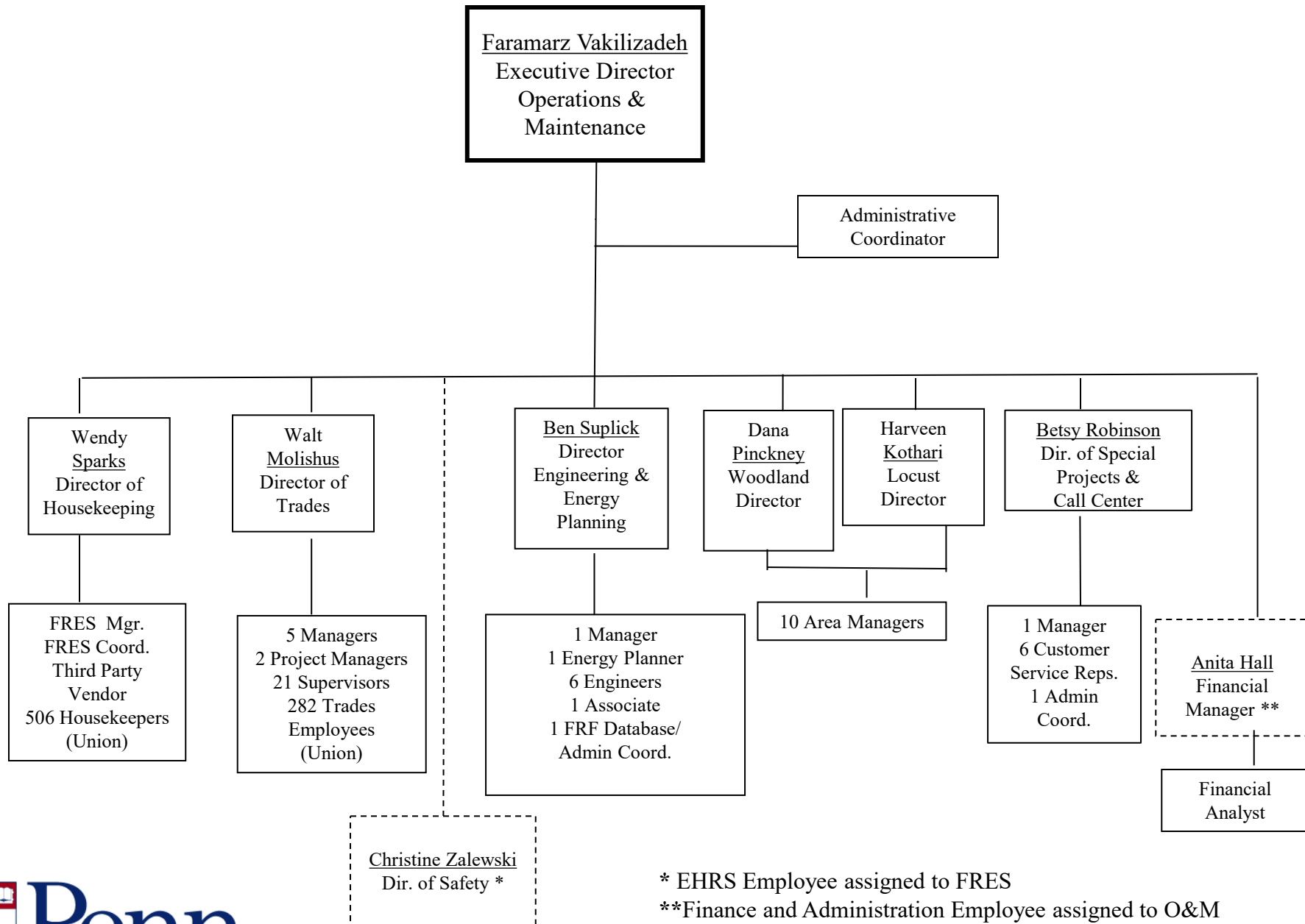


Division of Facilities & Real Estate Services



*Dual Reporting to FRES SVP and OUA

Division of Facilities & Real Estate Services

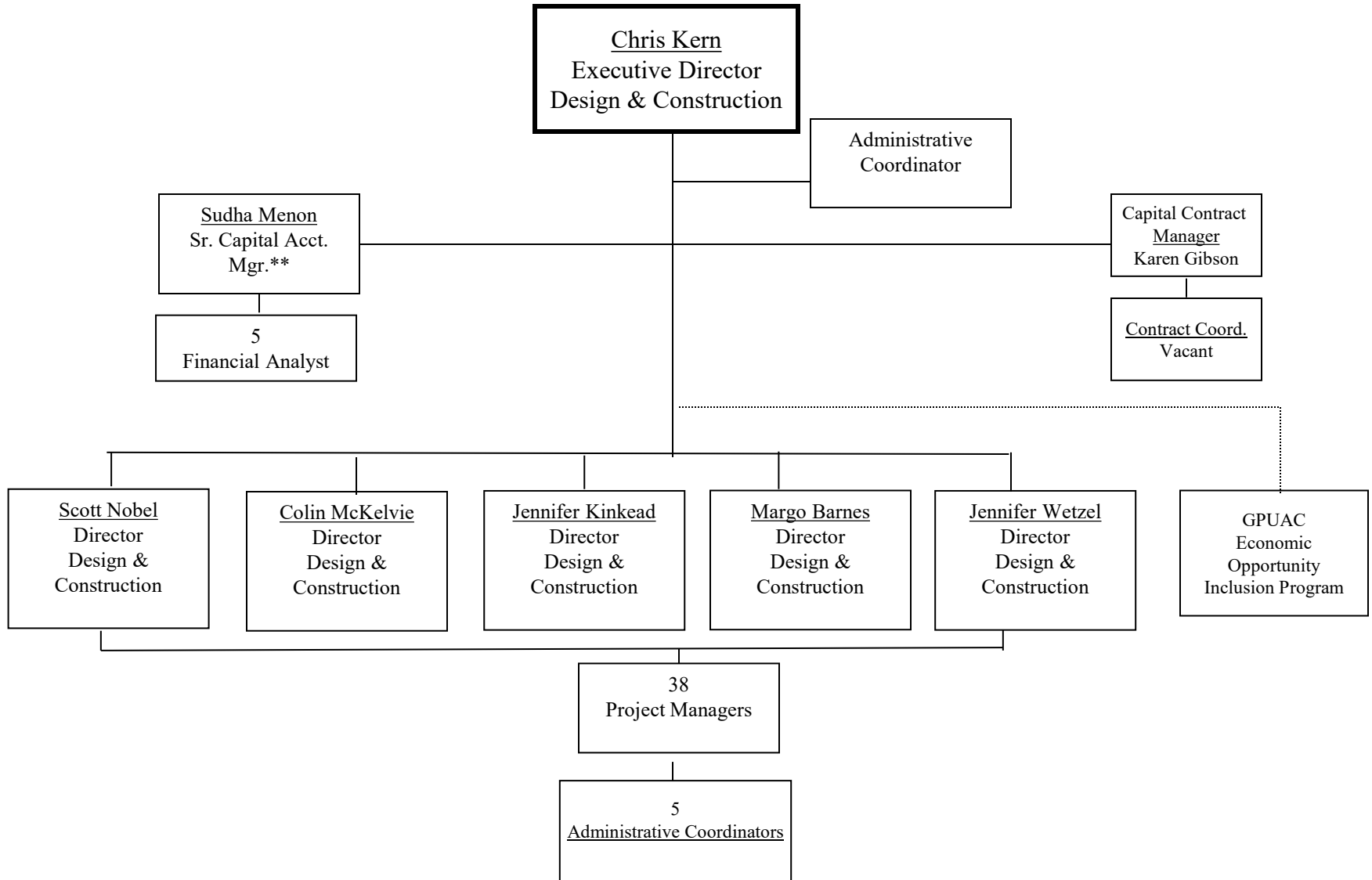


* EHRs Employee assigned to FRES

**Finance and Administration Employee assigned to O&M

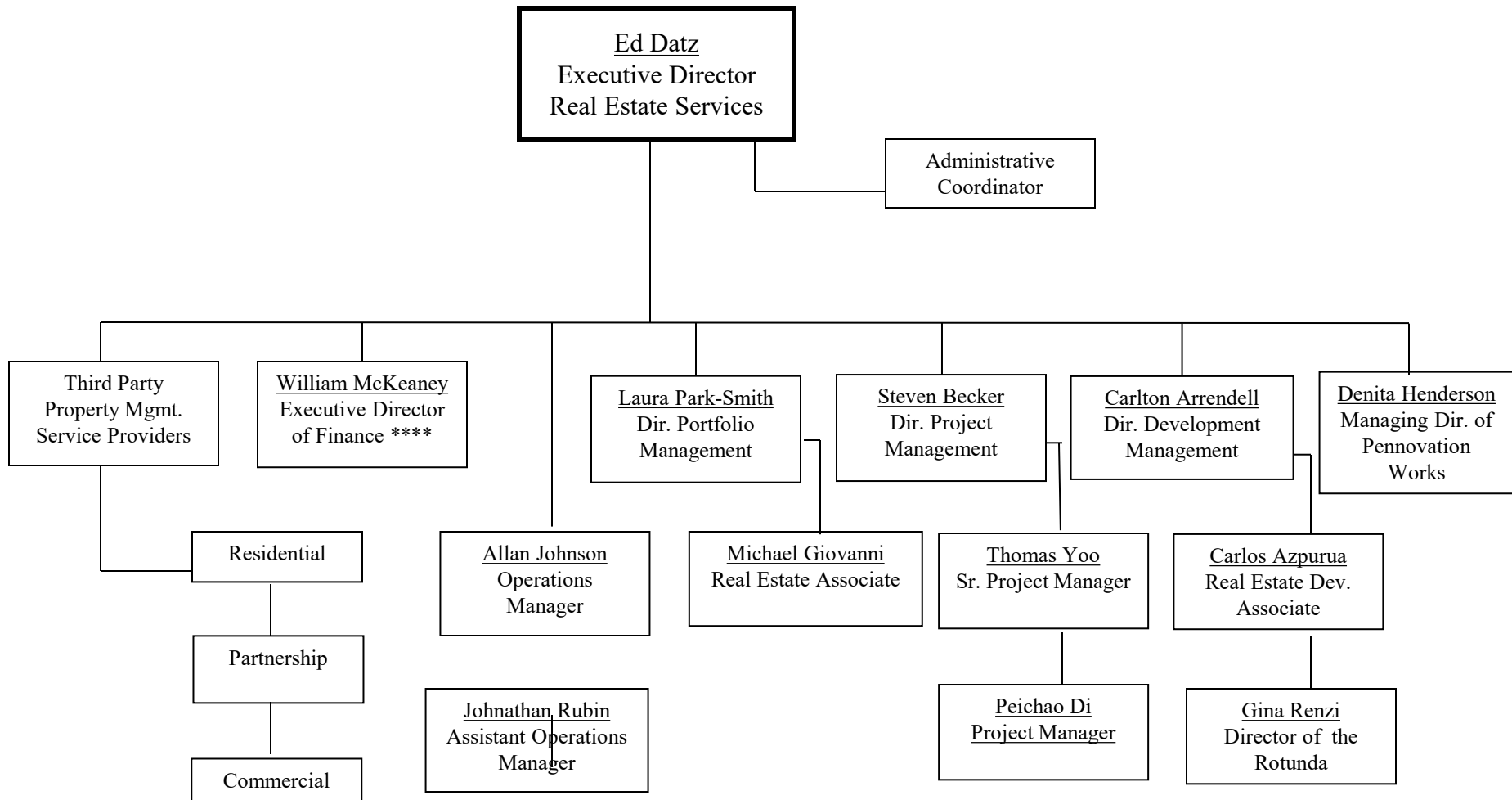
***Supports both Director of Labor Relations and FRES HR

Division of Facilities & Real Estate Services



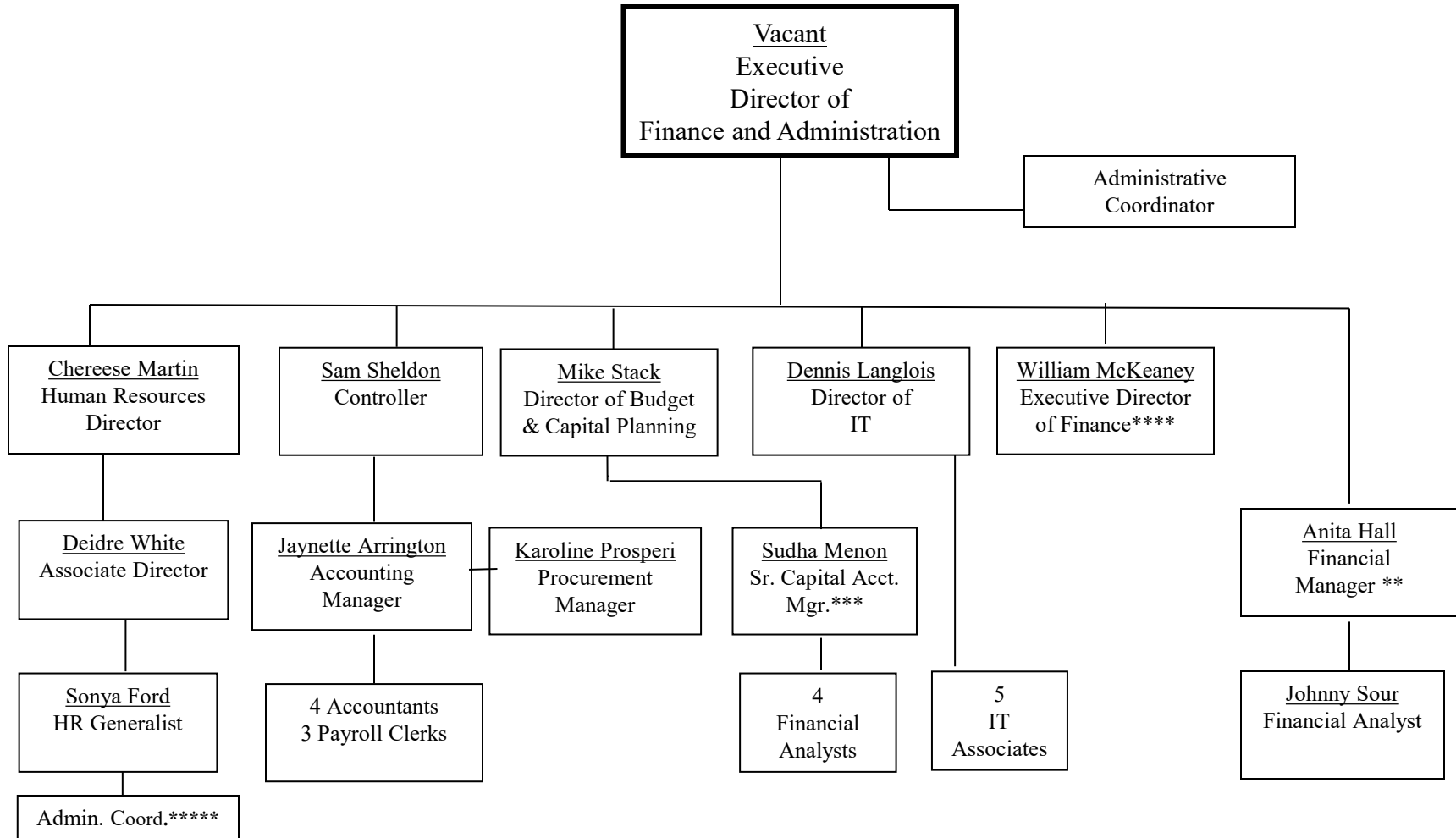
**Dual Reporting to Dir. of Budget & Capital Planning-Mike Stack

Division of Facilities & Real Estate Services



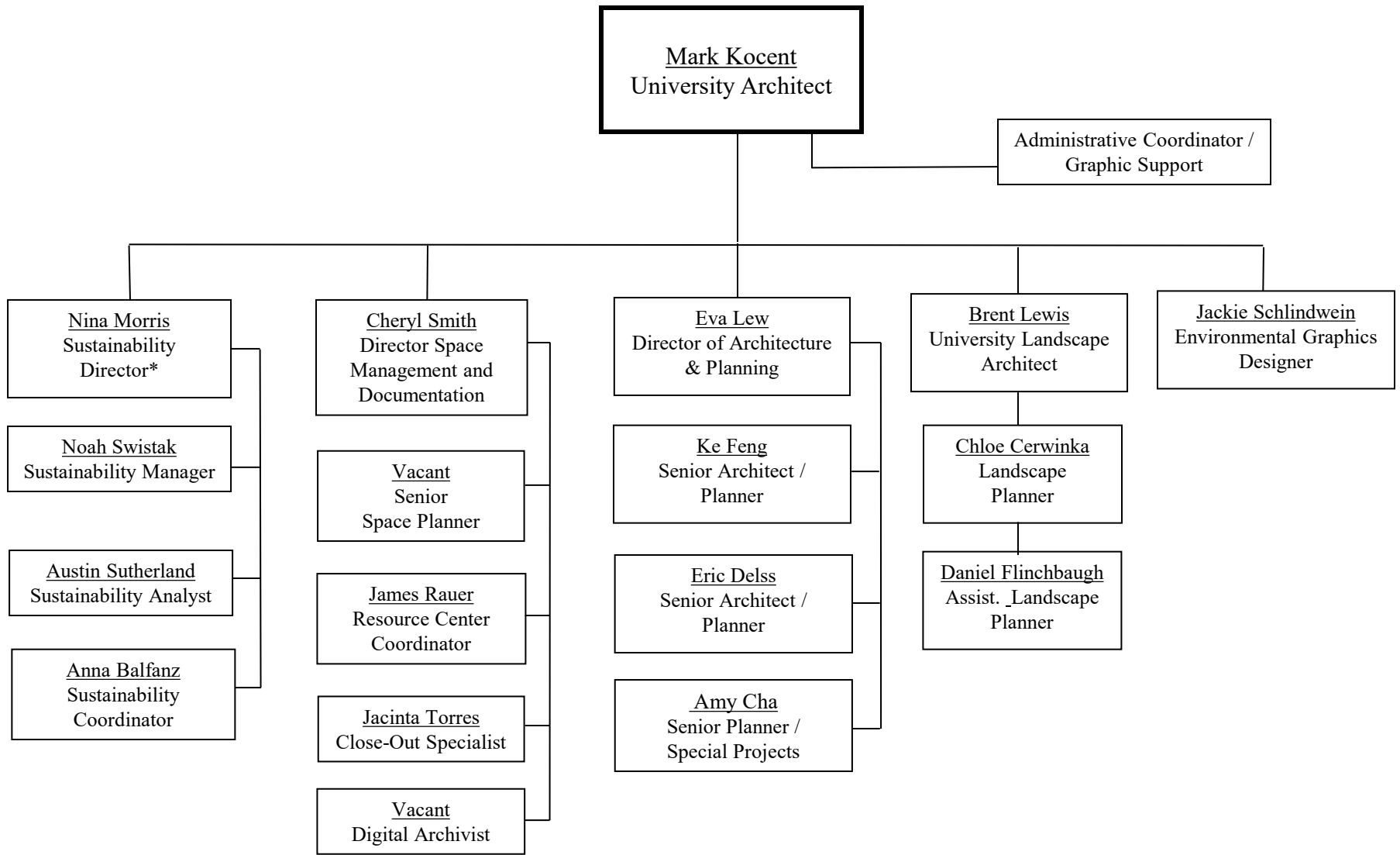
****Dual Reporting to Finance Administration

Division of Facilities & Real Estate Services



- ** Assigned to support finances for Operations & Maintenance
- *** Assigned to support finances for Design & Construction
- **** Assigned to support finances for Real Estate Services
- ***** Supports both Director of Labor Relations and FRES HR

Division of Facilities & Real Estate Services



* Dual report to FRES SVP and UA