



UNIVERSITY OF PENNSYLVANIA
FACILITIES SERVICES
3101 WALNUT STREET
PHILADELPHIA, PENNA. 19104-6289

MASTER DETAIL
HVAC DEPARTMENT

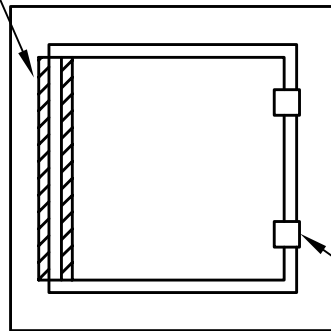
TITLE DUCT ACCESS DOORS

DATE
08-01-12

REV DATE

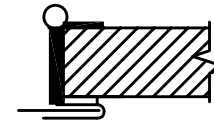
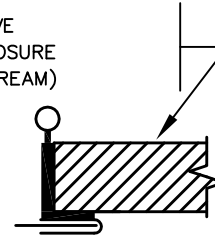
FILE NO.

PIANO HINGE



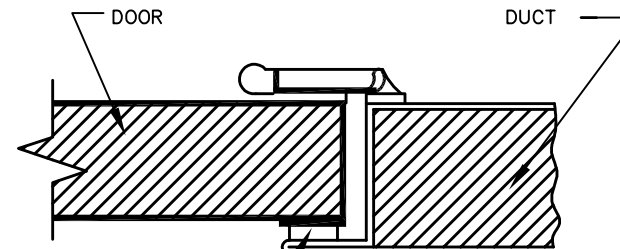
FRAME
HINGE POSITION

INSULATED DOORS SHALL HAVE
SIX-SIDED SHEETMETAL ENCLOSURE
(NO FILL EXPOSED TO AIR STREAM)



FRAME HINGE POSITION

SASH LOCK FOR
DOOR LESS
THAN 18"



GASKET

DOOR HANDLE (MIN. 3)
FOR DOORS LARGER
THAN 18"

FRAME

1'-1/4"

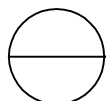
GASKET

DOOR

DUCT

NOTES:

- ① LABEL ALL ACCESSES CLEARLY STATING ITS PURPOSE WITH MIN. OF 2" HIGH LETTERS.
- ② ACCESS DOOR IN POSITIVE PRESSURE DUCTS DOWN STREAM OF FIRE DAMPERS, SMOKE DAMPERS OR AUTOMATIC DAMPERS SHALL BE OF THE PRESSURE RELIEF TYPED THAT AUTOMATICALLY RESETS. THE DAMPERS SHALL ALLOW AIR TO FLOW INTO THE DUCT UNDER HIGH NEGATIVE STATIC.



DUCT ACCESS DOORS

SCALE: NTS