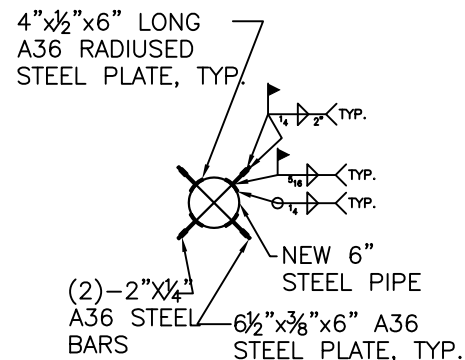
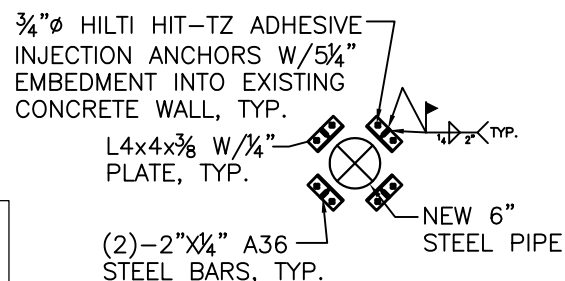


NOTES:

1. ALL DIMENSIONS AND FIELD CONDITIONS TO BE FIELD VERIFIED PRIOR TO FABRICATION.
2. PROVIDE  $\frac{1}{2}$ " MAX. DIMENSION FROM STEEL FLANGE TO BOTTOM OF BAR. RUN BAR THROUGH INSULATION.



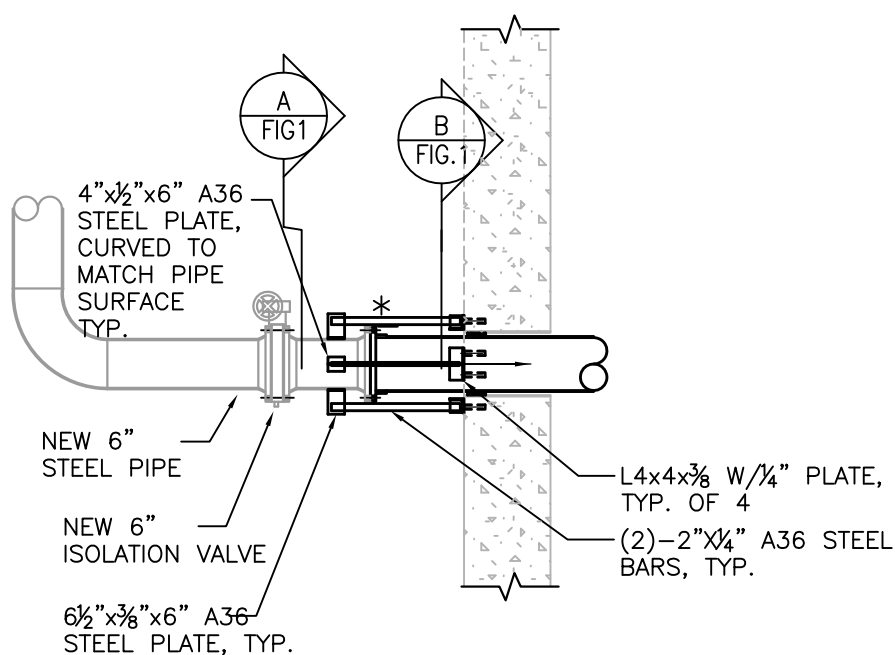
A  
FIG2



B  
FIG2

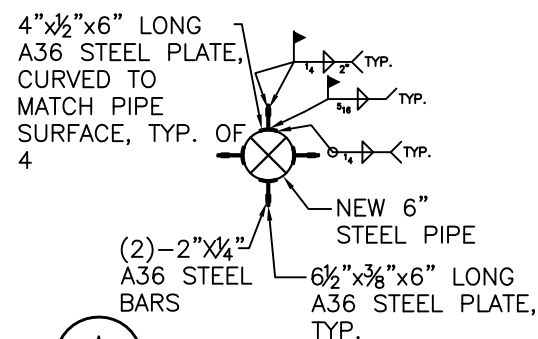
CHWS ANCHOR RESTRAINT DETAIL  
N.T.S.

**\*\*DETAIL IS TYPICAL FOR 6" PIPE. MODIFY DIMENSIONS AS NEEDED FOR ACTUAL PIPE SIZE REQUIRED FOR THE BUILDING**

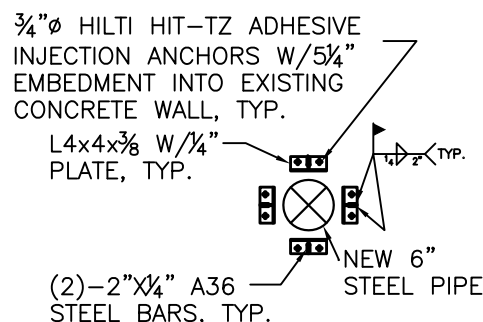


NOTES:

1. ALL DIMENSIONS AND EXISTING CONDITIONS TO BE FIELD VERIFIED PRIOR TO FABRICATION.
2. \* INDICATES  $\frac{1}{2}$ " MAX. DIMENSION FROM STEEL FLANGE TO BOTTOM OF BAR. RUN BAR THROUGH INSULATION.



A  
FIG1



B  
FIG1

CHWR ANCHOR RESTRAINT DETAIL  
N.T.S.